



**10 Bede Walk**  
South Gosforth





**PRICED TO REFLECT FULL MODERNISATION!** Detached Bungalow Offering Lounge, Kitchen/Breakfast Room, Two Double Bedrooms & Delightful West Facing Rear Gardens with No Onward Chain!

This detached, two bedroom bungalow, is perfectly placed on Bede Walk, South Gosforth. Bede Walk, which is a lovely pedestrianised walkway of detached single storey homes, is perfectly placed just off from Church Road and St. James's Street.

The property is also situated within walking distance of Gosforth High Street with its shops, cafes and restaurants, as well as being close to South Gosforth Metro Station offering easy access links into Newcastle City Centre and throughout the region.

Hallway | Lounge | Kitchen/breakfast room with door to the rear gardens | Two Double Bedrooms | Bathroom Externally, the property offers a small front garden and a lovely west facing rear garden that is laid mainly to lawn with fenced boundaries and gated access to a walkway which leads to Church Road.

Priced to reflect full modernisation throughout, this is an excellent opportunity to create a lovely home in this desirable and central location.

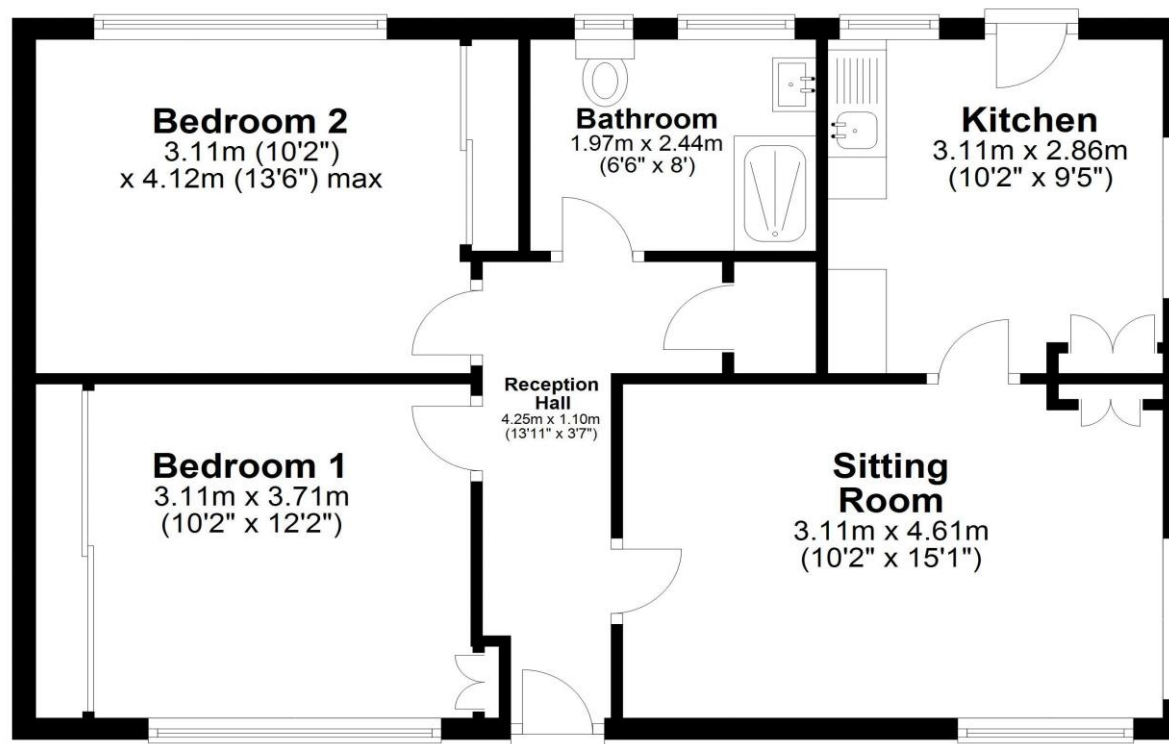
Services: To be confirmed | Tenure: To be confirmed | Council Tax: Band | Energy Performance Certificate: Rating E





## Ground Floor

Approx. 60.6 sq. metres (652.5 sq. feet)



Total area: approx. 60.6 sq. metres (652.5 sq. feet)

**10 Bede Walk, NEWCASTLE UPON TYNE**



All enquiries to our Gosforth Office | 95 High Street, Gosforth, Newcastle upon Tyne NE3 4AA

T: 0191 213 0033 | [www.sandersonyoung.co.uk](http://www.sandersonyoung.co.uk)

